

**Ifan Evans, Director  
Technology & Transformation  
Health & Social Services Group**



**Llywodraeth Cymru  
Welsh Government**

---

# **Cymru Iachach:**

**ein Cynllun Iechyd a Gofal Cymdeithasol**

---

# **A Healthier Wales:**

**our Plan for Health and Social Care**

---

**‘Achieving Our Plan: Together’**

**Public Health Wales Research  
Showcase Event  
13 March 2019**

**#cymruiachach**

**#ahealthierwales**

---

**Cymru Iachach:**

ein Cynllun Iechyd a Gofal Cymdeithasol

---

#cymruiachach

---

**A Healthier Wales:**

our Plan for Health and Social Care

---

#ahealthierwales

## The Parliamentary Review: Stronger Together

Recognised that **health & social care** in Wales is unsustainable & advocated **radical, transformational change** including:

The Parliamentary Review of Health  
and Social Care in Wales

---

A Revolution from Within:  
Transforming Health and Care in Wales

- Bold new models of seamless **care** developed nationally, but co-produced & implemented regionally and locally
- Adoption of the Quadruple Aim across **Health & Social Care**, including for R&D, innovation & (improvement) planning
- Rationalisation & alignment of improvement support services across **Health & Social Care** in Wales

# Cymru Iachach:

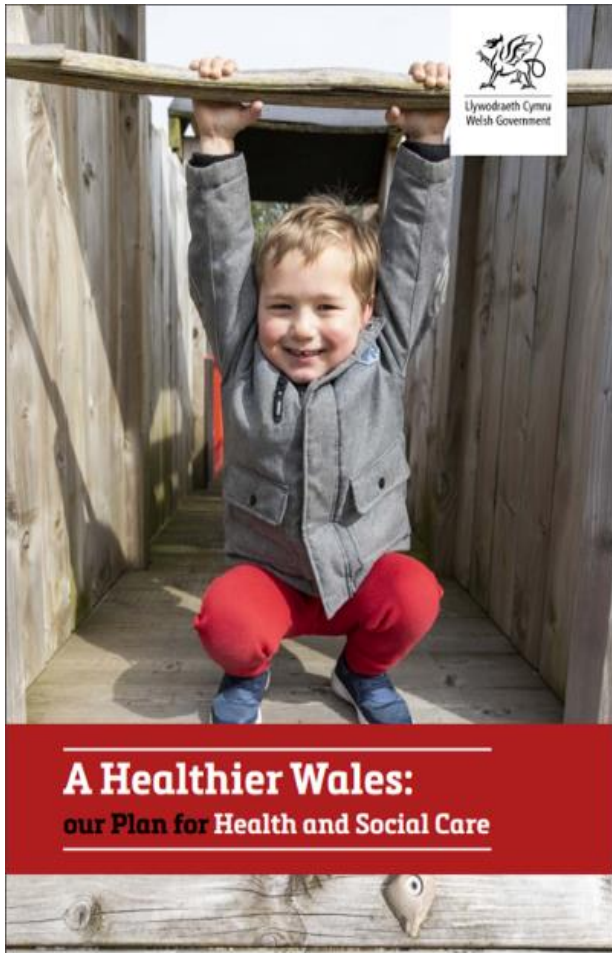
ein Cynllun Iechyd a Gofal Cymdeithasol

#cymruiachach

# A Healthier Wales:

our Plan for Health and Social Care

#ahealthierwales



- WG response to the PR 2018 of Health & Social Care in Wales which called for “a revolution from within”.
- Long term future vision of a whole-system approach to health and social care, focussed on prevention and equality of outcomes.
- Prudent Healthcare philosophy, Quadruple Aim as a central idea, supported by 10 practical ‘Design Principles’ to guide a transformation agenda.
- 40 practical actions – partnership approach with service providers - to achieve the vision.
- Unprecedented level of stakeholder input must not be lost

# Cymru Iachach:

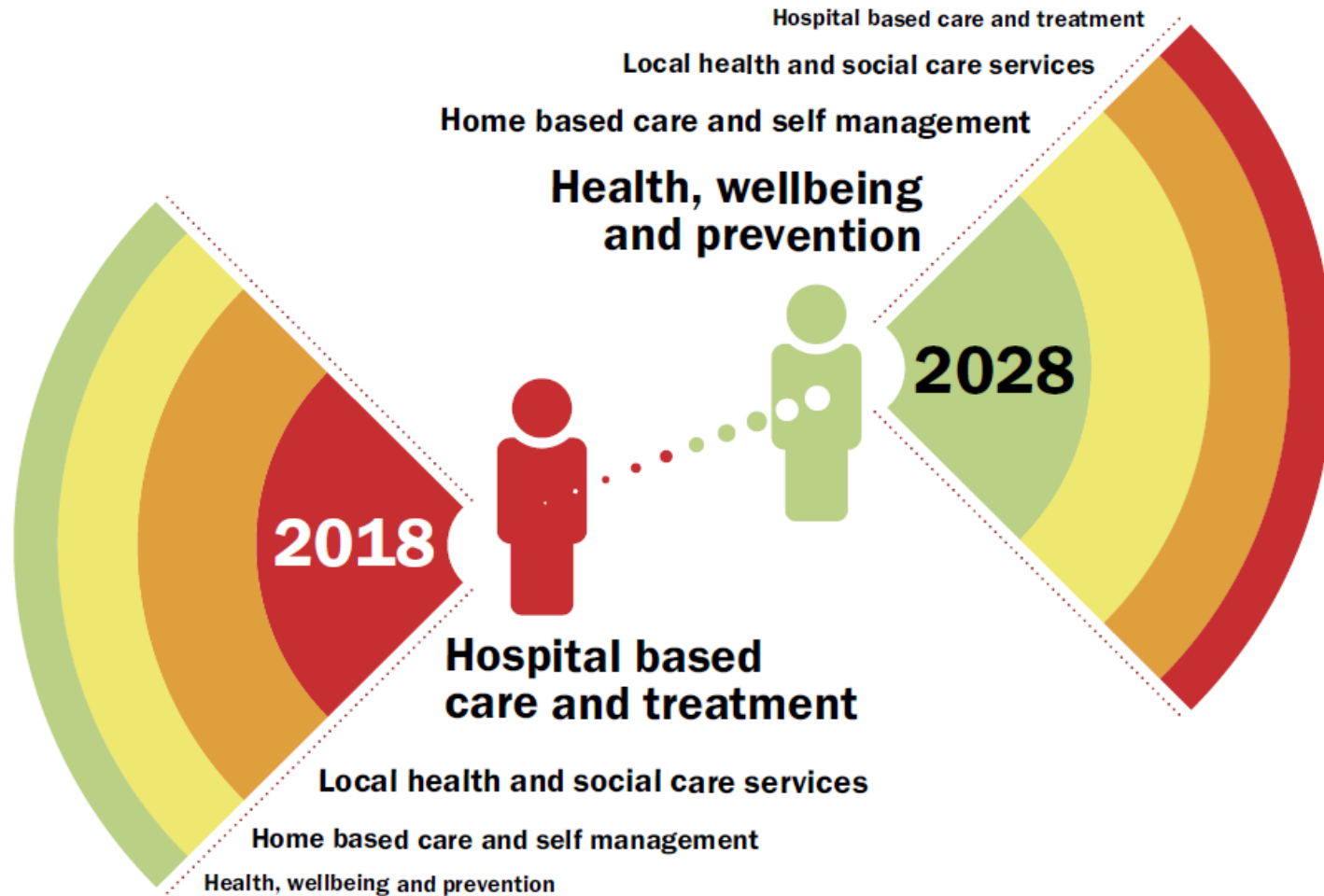
ein Cynllun Iechyd a Gofal Cymdeithasol

#cymruiachach

# A Healthier Wales:

our Plan for Health and Social Care

#ahealthierwales



# Cymru Iachach:

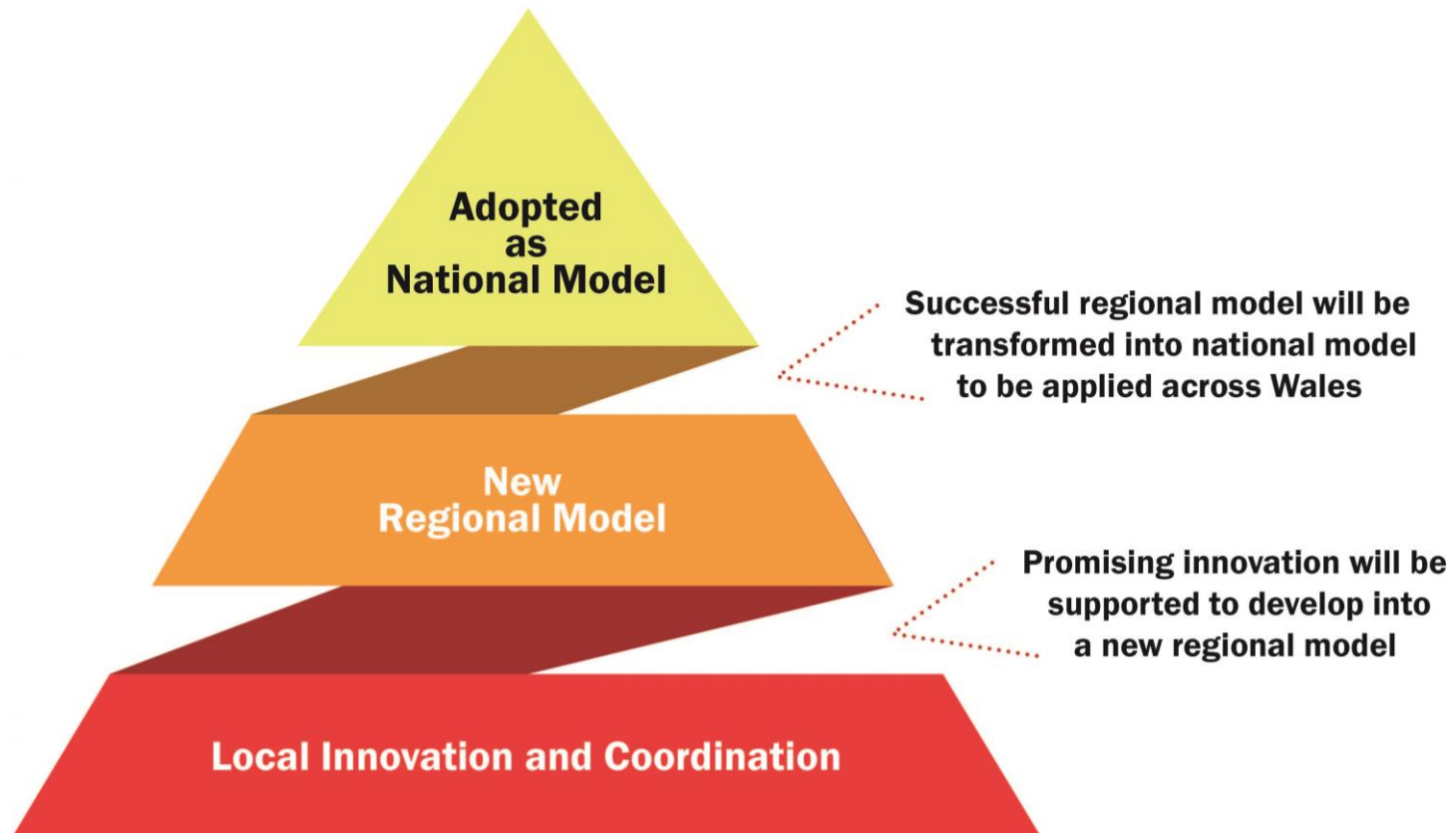
ein Cynllun Iechyd a Gofal Cymdeithasol

#cymruiachach

# A Healthier Wales:

our Plan for Health and Social Care

#ahealthierwales



---

# Cymru Iachach:

ein Cynllun Iechyd a Gofal Cymdeithasol

---

#cymruiachach

---

# A Healthier Wales:

our Plan for Health and Social Care

---

#ahealthierwales

## What are we trying to bring together?



- Health **and** social care
- New models of **seamless** local health and social care
- To be driven by regional **partnership** boards
- Better **co-ordination** of research innovation and **improvement**
- In pursuit of **quality and value**
- **Link local innovation to national leadership and direction**

---

**Cymru Iachach:**

**ein Cynllun Iechyd a Gofal Cymdeithasol**

---

**#cymruiachach**

---

**A Healthier Wales:**

**our Plan for Health and Social Care**

---

**#ahealthierwales**

## **What are we trying to bring together?**

### **Research**

New knowledge, hypothesis testing, theme identification and exploration.

### **Innovation**

Development and delivery of new or improved policies, systems, products, technologies, services and delivery methods.

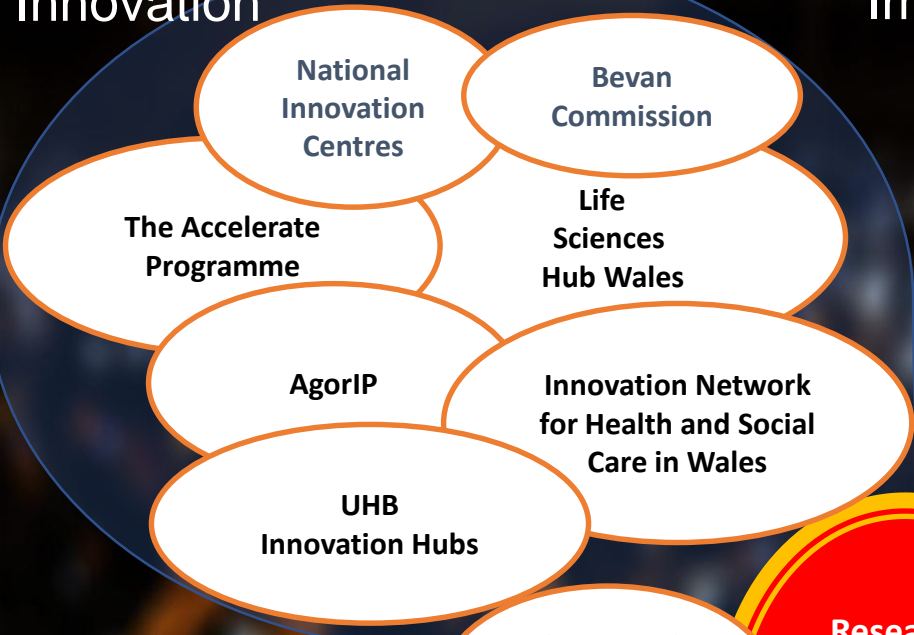
### **Improvement**

Bespoke cycles of testing and scaling to achieve sustained, higher value, quality led improvement.

### **And more...**

‘University’  
Life Sciences Hub  
Health Technology Wales  
Health Innovation Centres  
Industry Partners

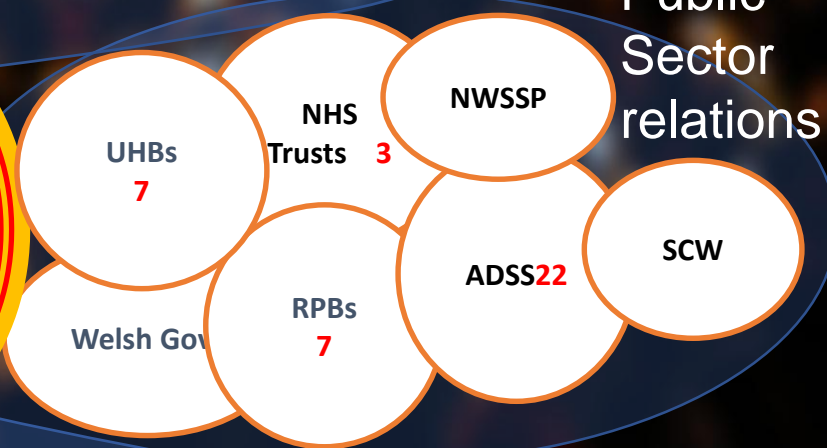
# Innovation



# Improvement



# Public Sector relations



# Research



# Funding





# Cymru Iachach:

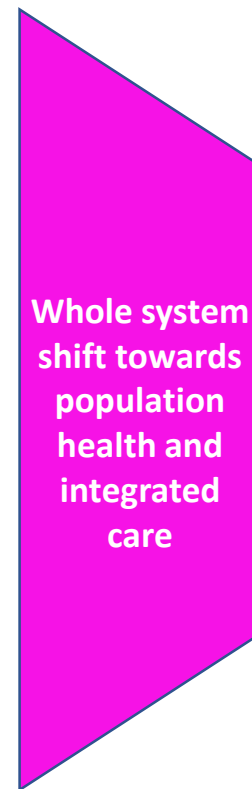
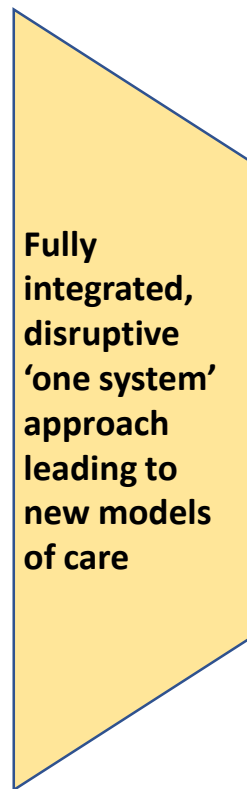
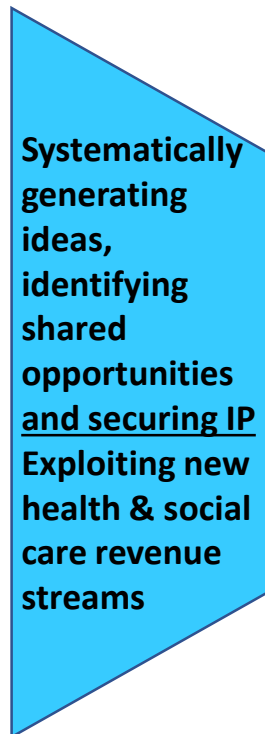
ein Cynllun Iechyd a Gofal Cymdeithasol

#cymruiachach

# A Healthier Wales:

our Plan for Health and Social Care

#ahealthierwales



---

## Cymru Iachach:

ein Cynllun Iechyd a Gofal Cymdeithasol

---

#cymruiachach

---

## A Healthier Wales:

our Plan for Health and Social Care

---

#ahealthierwales

### A national network of regional hubs to co-ordinate research, innovation & improvement

- providing a **comprehensive and current overview** of all research, innovation and improvement activity across the RPB area
- developing a **coherent strategic analysis** of this activity
- ensuring that **leaders, partners and stakeholders are informed and engaged**
- **working with other regional hubs as a national network**, with an emphasis on driving the adoption and spread of activity
- **working with national bodies** such as the Life Sciences Hub, Health Technology Wales

---

**Cymru Iachach:**

**ein Cynllun Iechyd a Gofal Cymdeithasol**

---

#cymruiachach

---

**A Healthier Wales:**

**our Plan for Health and Social Care**

---

#ahealthierwales

Questions?

Diolch i chi. Thank You.